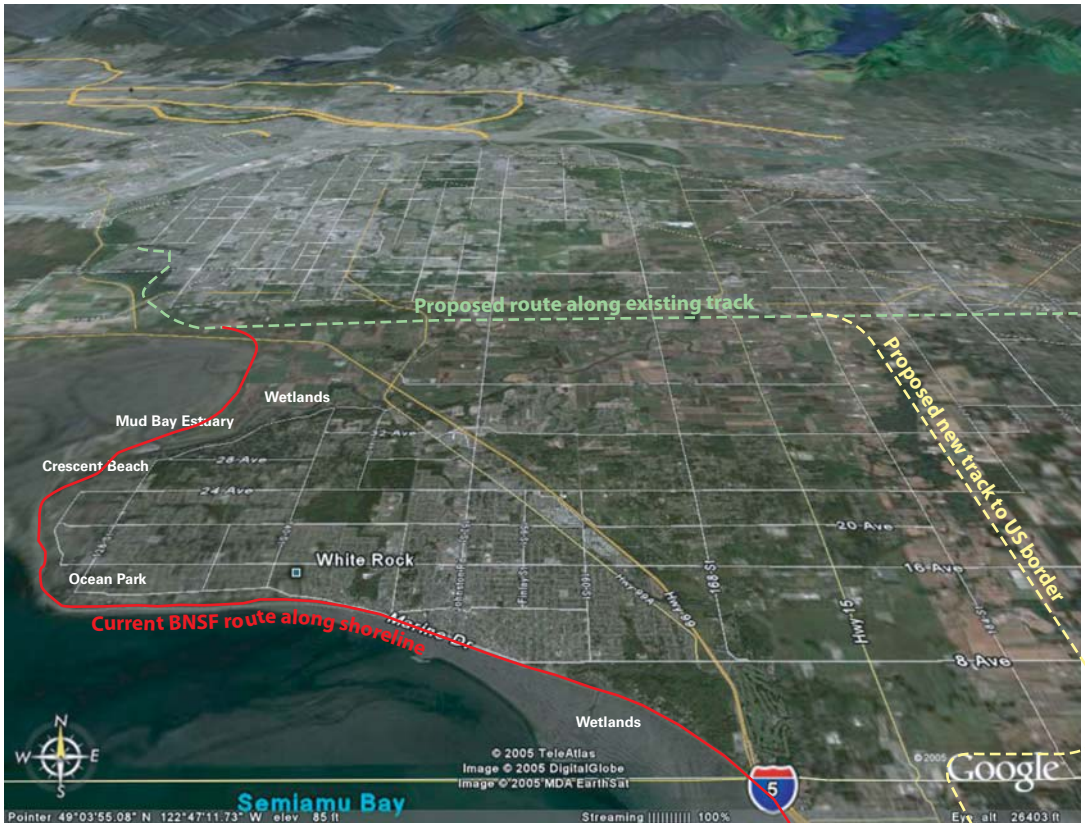


Semiahmoo Peninsula Citizens for Public Safety

Proposal for routing dangerous freight traffic away from populated areas

Toxic chemicals, explosive gases and heavy loads pose potentially disastrous consequences in populated areas. Tell your Member of Parliament you no longer wish to bear the physical and financial risk of a potentially devastating derailment, chemical spill or explosion while there are safer and cost-effective alternative routes. Have Ottawa ban freight transport through Crescent Beach, Ocean Park, White Rock and environmentally sensitive wetland areas.



Fact Check:

- Semiahmoo peninsula is an environmentally highly sensitive area.
- The mud bay estuary is a crucial stop on the migratory 'highway' for millions of birds.
- Freight trains pose a grave threat to this critical and highly sensitive wetlands area.
- Toxic, explosive and heavy loads pose potentially disastrous consequences in populated areas.
- There is no need - other routes are available, through much less populated area.
- New freight route is straight, can be traversed quickly and safely, unlike winding shoreline route.
- Vast potential exists for recreational parkland and real estate on reclaimed shoreline.