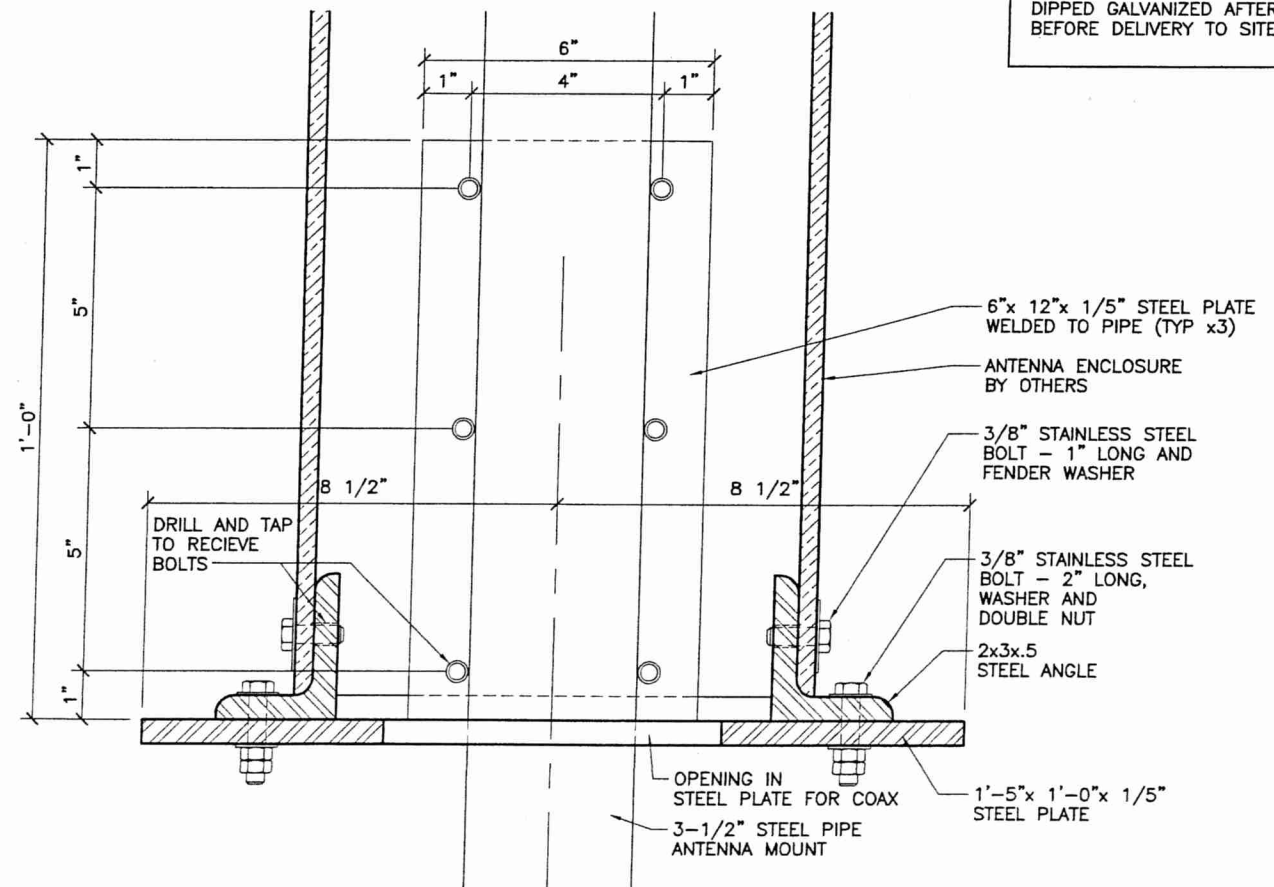
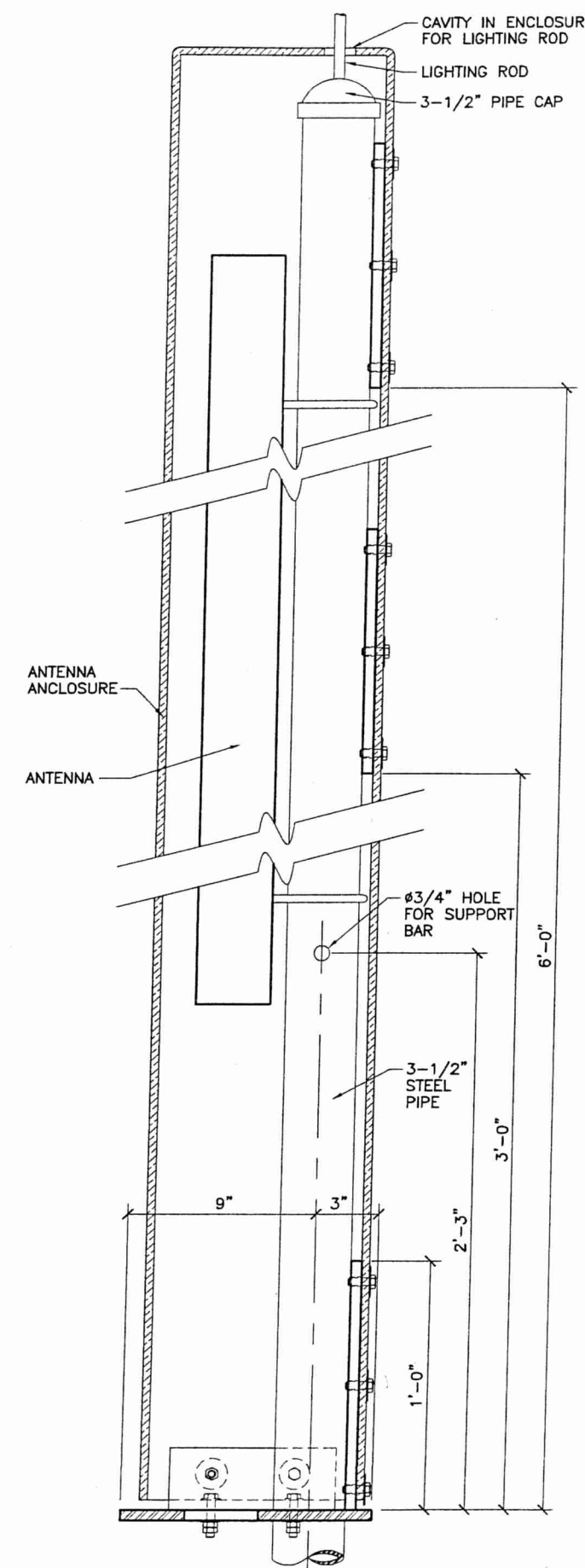


1 ANTENNA MOUNT DETAIL
SCALE: 3" = 1'-0"



2 ANTENNA MOUNT DETAIL
SCALE: 3" = 1'-0"

NOTE:
1) ALL STEEL COMPONENTS TO BE HOT DIPPED GALVANIZED AFTER FABRICATION AND BEFORE DELIVERY TO SITE.



3 ANTENNA MOUNT DETAIL
SCALE: 1-1/2" = 1'-0"



ArchComm Design, Inc. Architects
1840 Lockhill-Selma, Suite 101
San Antonio, Texas 78213
(210)308-9905

DATE: OCT 28 2005



EXP. DATE: 02/28/06

THESE DRAWINGS ARE THE PROPERTY OF SPRINT PCS. THEY ARE INTENDED FOR THE EXCLUSIVE USE OF THIS PROJECT ONLY. ANY RE-USE OF THESE PLANS (DRAWINGS) WITHOUT THE EXPRESS WRITTEN CONSENT OF SPRINT PCS IS PROHIBITED.



CHURCH OF THE REDEEMER
HO70XC883B
4411 2/3 DALLAS STREET, HOUSTON, TX 77023 (911 ADDRESS)

SHEET TITLE	
ANTENNA MOUNT DETAILS	
SHEET HISTORY	
10.28.05	ISSUE FOR CONSTRUCTION
1.	
2.	
3.	
4.	
A6.3	
SA055053	

10/27/2005 10:57:34 AM, jlmendez